

Concrete Pave Stones
ADA Compliant Paver



PAVESTONES[®]

IMPROVING
YOUR
LANDSCAPE[™]

ADA Compliant Paver

The ADA Compliant Paver is an additional guidance provision for wheelchair and pedestrian access to streets, sidewalks and other components of the public right of way. This product will help ensure local jurisdictions and other entities that their facilities are accessible to people with physical or sensory disabilities. Available in a variety of colors, the ADA Compliant Paver provides visual as well as textural contrast to conventional publicly utilized pavements.

COMPOSITION AND MANUFACTURE

The ADA Compliant Paver is made from a "no slump" concrete mix. Made under extreme pressure and high frequency vibrations, the ADA Compliant Paver has a compressive strength greater than 8000psi, a water absorption maximum of 5% and will meet or exceed ASTM C-936 and freeze-thaw testing per Section 8 of ASTM C-67.

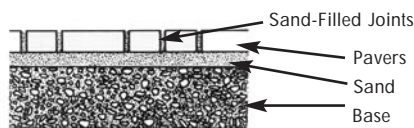
INSTALLATION

1. Excavate unsuitable, unstable or unconsolidated subgrade material and compact the area which is to receive the pave stones. Backfill, place and level the excavated area with a 4 inch minimum of a structural base material or as otherwise directed by Site Engineer/Architect/Landscape Architect. Engineering may be required.
2. Place bedding course of washed sand conforming to the grading requirements of ASTM C-33 to a uniform depth of 1-1/2 in. (25-38mm) screeded to the grade and profile required.
3. Install the ADA Compliant Paver with joints approximately 1/8 in. (3mm).
4. Where required, cut pave stones with an approved cutting device to fit accurately, neatly and without damaged edges.
5. Tamp pave stones with a plate compactor, uniformly level, true to grade and free of movement.
6. Spread sand to 1/8 in. thickness over entire paving area.
7. Make one more pass with plate compactor to fill joints with sand.

Complete installation & specification details are available by contacting your Pavestone Company Sales Representative.

Note: Colors are shown as accurately as possible in brochures & samples, but due to the nature of the product, regional color preferences and variables in print reproduction, colors may not match exactly. For best results in maintaining color consistency, paves stones must be installed from several cubes at a time. Efflorescence, a whitish, powder-like deposit, may appear on concrete pave stones. This is a natural occurrence in any concrete product and will usually wear off over time.

Typical Cross Section Of Concrete Paver Installation



The Strength of a National Company
With Local Customer Service

PAVESTONE
Improving Your Landscape™
www.pavestone.com

- Atlanta, GA: (770) 306-9691
- Austin/San Antonio, TX: (512) 558-7283
- Boston, MA: (508) 947-6001
- Cartersville, GA: (770) 607-3345
- Charlotte, NC: (704) 588-4747
- Cincinnati, OH: (513) 474-3783
- Colorado Springs, CO: (719) 322-0101
- Dallas/Ft. Worth, TX: (817) 481-5802
- Denver, CO: (303) 287-3700
- Hagerstown, MD: (240) 420-3780

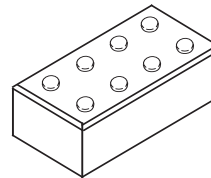
- Houston, TX: (281) 391-7283
- Kansas City, MO: (816) 524-9900
- Las Vegas, NV: (702) 221-2700
- New Orleans, LA: (985) 882-9111
- Phoenix, AZ: (602) 257-4588
- Sacramento/Winters, CA: (530) 795-4400
- St. Louis/Cape Girardeau, MO: (573) 332-8312

APPLICATIONS

Transportation Centers • Street Intersections Hazardous Vehicle Areas • Pedestrian Ramps

PRODUCT INFORMATION

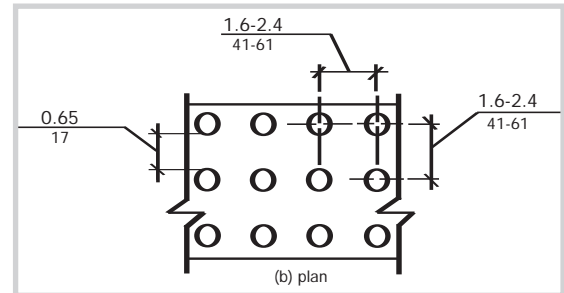
The ADA Compliant Paver is available in 1 size and 1 thickness, 60mm = 2 3/8"



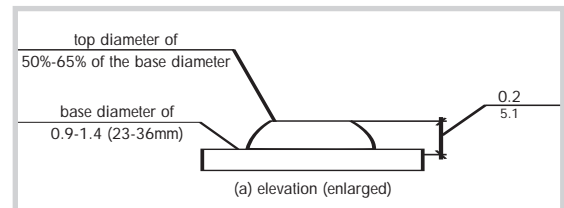
ADA Paver

Nominal Dimensions	3 7/8" W x 7 13/16" L
	98mm x 198mm
Height/Thickness:	60mm = 2 3/8"
Wt./Stone:	6.125 lbs.
Stones/Sq.Ft:	4.66
Stones/Pallet:	480
Approx. Wt./Pallet :	2,884 lbs.
Sq.Ft./Pallet:	103
Product Number:	200

*Fractional dimensions are nominal.



The ADA Compliant Paver
Top View



The ADA Compliant Paver
Truncated Dome Cross Section

Figure 705.1 Size and Spacing of Truncated Domes

705.1.1 Dome Size. Truncated domes in a detectable warning surface shall have a base diameter of 0.9 inch (23 mm) minimum and 1.4 inches (36 mm) maximum, a top diameter of 50 percent of the base diameter minimum to 65 percent of the base diameter maximum, and a height of 0.2 inch (5.1 mm).

705.1.2 Dome Spacing. Truncated domes in a detectable warning surface shall have a center-to-center spacing of 1.6 inches (41 mm) minimum and 2.4 inches (61 mm) maximum, and a base-to-base spacing of 0.65 inch (17 mm) minimum, measured between the most adjacent domes on a square grid.

705.1.3 Contrast. Detectable warning surfaces shall contrast visually with adjacent walking surfaces either light-on-dark, or dark-on-light.