

Concrete Pave Stones
Bishop's Hat



PAVESTONE®

IMPROVING
YOUR
LANDSCAPE™

Bishop's Hat

The Bishop's Hat consists of two geometric concrete pave stones that offer a vast array of design possibilities. The two shapes modulate together to form a beautiful kaleidoscope of pattern options. Designs are further enhanced when contrasting colors are used. A distinctive paving product, the Bishop's Hat adds a distinguishing complement to any project.

COMPOSITION AND MANUFACTURE

Bishop's Hat is made from a "no slump" concrete mix. Made under extreme pressure and high frequency vibrations, Bishop's Hat has an average compressive strength greater than 8000 psi, a water absorption maximum of 5% and will meet or exceed ASTM C-936 and freeze-thaw testing per Section 8 of ASTM C-67.

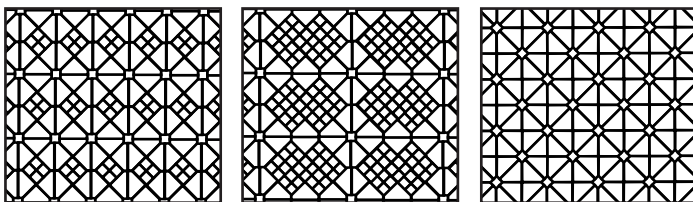
INSTALLATION

1. Excavate unsuitable, unstable or unconsolidated subgrade material and compact the area which has been cleared. Backfill and level with dense graded aggregate suitable for base material (typically 4-6 in. of compacted base for light vehicular and pedestrian traffic) or as otherwise directed by Site Engineer/Architect/Landscape Architect.
2. Place bedding course of washed sand conforming to the grading requirements of ASTM C-33 to a uniform depth of 1-1¹/₂ in. (25-38mm) screeded to the grade and profile required.
3. Install Bishop's Hat with joints approximately 1/8 in. (3mm).
4. Where required, cut pave stones with an approved cutting device to fit accurately, neatly and without damaged edges.
5. Tamp pave stones with a plate compactor, uniformly level, true to grade and free of movement.
6. Spread sand to 1/8 in. (3mm) thickness over entire paving area.
7. Make one more pass with plate compactor to fill joints with sand.

Complete installation & specification details are available by contacting your Pavestone Sales Representative.

Note: Colors are shown as accurately as possible in brochures & samples, but due to the nature of the product, regional color differences and variables in print reproduction, colors may not match exactly. For best results in maintaining color consistency, pavers must be installed from several cubes at a time. Efflorescence, a whitish, powder-like deposit, may appear on concrete pavers. This is a natural occurrence in any concrete product and will usually wear off over time.

INSTALLATION PATTERNS



APPLICATIONS

Sidewalks • Garden Pathways • Patios • Esplanades
Medians • Plazas • Terraces • Pool Decks • Gazebos

PRODUCT INFORMATION

Bishop's Hat is available in a thickness of 60mm = 2 3/8".
Quantity/sq. ft. approximately 2.78 stones.



Bishop's Hat

Nominal Dimensions	7 3/8" W x 11 1/8" L
	187mm x 282.8mm
Wt./Stone	10.05 lbs.
Stones/Pallet	240
Approx. Wt./Pallet	2,464 lbs.
Sq. ft./Pallet	88
Product Number	271

Coordinating Square (City Stone™ IV) is available in a thickness of 60mm = 2 3/8".

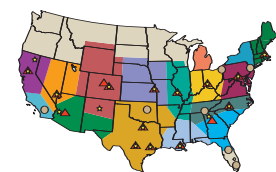
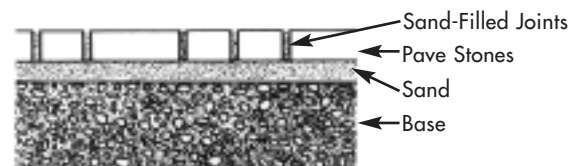


Square (City Stone™ IV)

Nominal Dimensions	3 7/8" W x 3 7/8" L
	98mm x 98mm
Wt./Stone	3 lbs.
Stones/Pallet	960
Approx. Wt./Pallet	2,884 lbs.
Sq. ft./Pallet	103
Product Number	213

*Fractional dimensions are nominal.

Typical Cross Section Of Concrete Pave Stone Installation



PAVESTONE[®]
Improving Your Landscape™
www.pavestone.com

• Atlanta, GA:	(770) 306-9691	• Houston, TX:	(281) 391-7283
• Austin/San Antonio, TX:	(512) 558-7283	• Kansas City, MO:	(816) 524-9900
• Boston, MA:	(508) 947-6001	• Las Vegas, NV:	(702) 221-2700
• Cartersville, GA:	(770) 607-3345	• New Orleans, LA:	(985) 882-9111
• Charlotte, NC:	(704) 588-4747	• Phoenix, AZ:	(602) 257-4588
• Cincinnati, OH:	(513) 474-3783	• Sacramento/ Winters, CA:	(530) 795-4400
• Colorado Springs, CO:	(719) 322-0101	• St. Louis/ Cape Girardeau, MO:	(573) 332-8312
• Dallas/Ft. Worth, TX:	(817) 481-5802		
• Denver, CO:	(303) 287-3700		
• Hagerstown, MD:	(240) 420-3780		

